

## what i saw: john baldessari prints, 1976–2015

OPENS SATURDAY, FEBRUARY 8, 4–6 PM

John Baldessari (b. 1931, National City, California) has been widely regarded as one of contemporary art's most influential artists. To celebrate the artist's life and to commemorate his passing on January 2, 2020, Cirrus presents an exhibition of Baldessari prints, spanning nearly forty years. The exhibition will inaugurate Cirrus's fiftieth anniversary year, and celebrate its long collaboration with the Los Angeles-based conceptual artist. It opens February 8 and runs through April 14.

Baldessari's signature use of montage, use of banal images in sometimes discordant visual juxtapositions, and his self-consciously populist approach, use of found photographs, film stills, or photography of everyday objects, employs allegory and disjointed narrative, in sometimes obfuscating ways, and invites the viewer to construct meaning. The exhibition includes several important portfolios and individual works produced in collaboration with Cirrus, showcasing the artist's signature wit and biting insight.

Internationally recognized and widely exhibited, Baldessari addressed the social and cultural impact of mass culture, and reinvented the terms of display and image-making throughout his career. Cirrus honors his legacy and celebrates a decades-long collaboration with the artist on multiple projects, in this exhibition that reconsiders his sharp wit and acute vision, and marks an important milestone in the history of the publisher and gallery.

John Baldessari (b. 1931). **The Fallen Easel**, 1988. Lithograph, silkscreen on Arches 88, Ragcote, and five aluminum plates, ed. 35. Approx. 74 x 95 in.

# what i saw

## john baldessari prints, 1976–2015

FEBRUARY 8–APRIL 14, 2020



### 1. **Raw Prints**, 1976

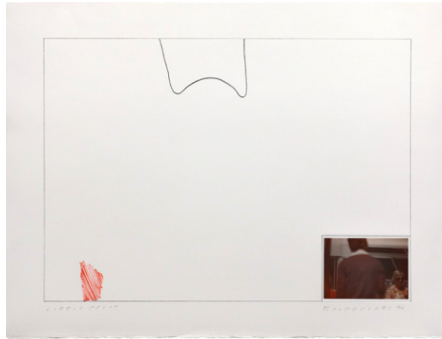
Portfolio of 6 prints,

ed. 50

\$24,000

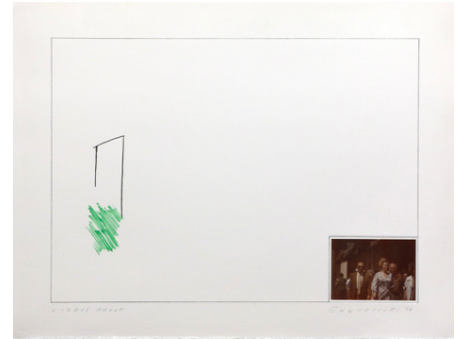
#### **Raw Prints (Red)**

Lithograph, hand-tipped color photograph and embossing  
18 ¾ x 24 ½ in.



#### **Raw Prints (Green)**

Lithograph, hand-tipped color photograph and embossing  
18 ¾ x 24 ½ in.



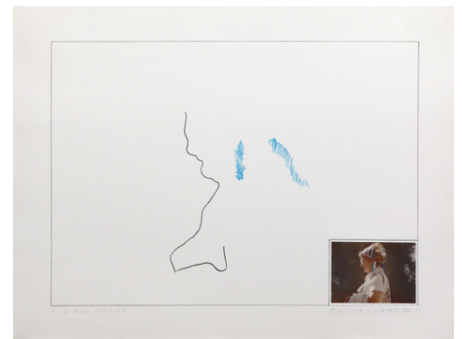
#### **Raw Prints (Orange)**

Lithograph, hand-tipped color photograph and embossing  
18 ¾ x 24 ½ in.



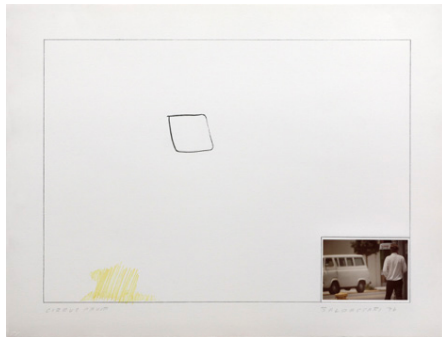
#### **Raw Prints (Blue)**

Lithograph, hand-tipped color photograph and embossing  
18 ¾ x 24 ½ in.



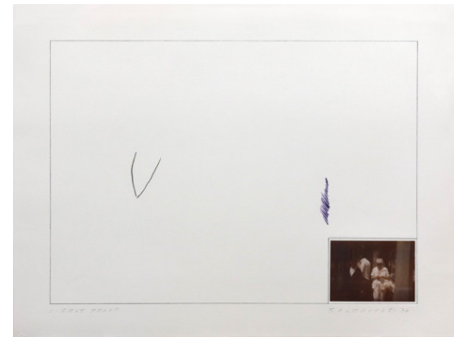
#### **Raw Prints (Yellow)**

Lithograph, hand-tipped color photograph and embossing  
18 ¾ x 24 ½ in.



#### **Raw Prints (Purple)**

Lithograph, hand-tipped color photograph and embossing,  
18 ¾ x 24 ½ in.



# what i saw

## john baldessari prints, 1976–2015

FEBRUARY 8–APRIL 14, 2020

CIRRUS  
project 50

### 2. **Hegel's Cellar**, 1986

Portfolio of 10 prints, ed. 35

\$35,000

### **Two Figures**

**(One with Shadow)**

Photogravure

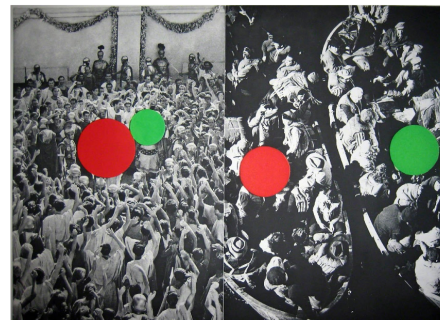
20 <sup>5</sup>/<sub>16</sub> × 19 <sup>7</sup>/<sub>8</sub> in.



### **Two Boats**

Photogravure and  
aquatint

19 <sup>1</sup>/<sub>2</sub> × 26 <sup>5</sup>/<sub>16</sub> in.



### **Kiss, Hair, Hands**

Photogravure, drypoint,  
and embossing

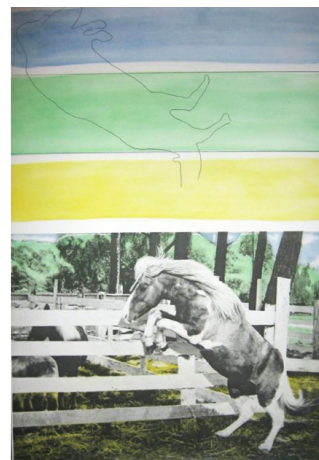
28 <sup>15</sup>/<sub>16</sub> × 19 <sup>7</sup>/<sub>8</sub> in.



### **Three Colors (with Horse Ascending)**

Photogravure

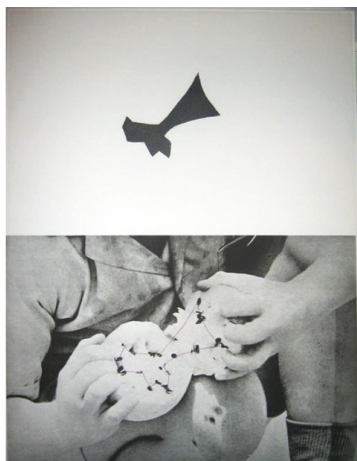
30 <sup>1</sup>/<sub>8</sub> × 20 <sup>1</sup>/<sub>16</sub> in.



### **Seeds**

Photogravure and  
aquatint

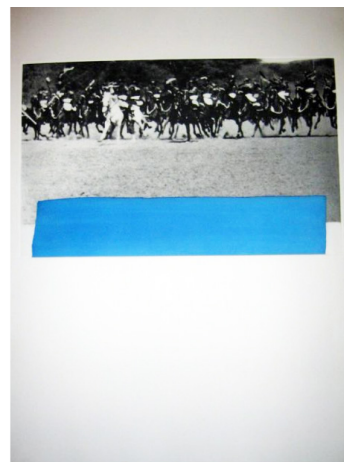
26 × 19 <sup>7</sup>/<sub>8</sub> in.



### **Cavalry**

Photogravure and  
aquatint

30 × 22 <sup>5</sup>/<sub>16</sub> in.





# what i saw

## john baldessari prints, 1976–2015

FEBRUARY 8–APRIL 14, 2020

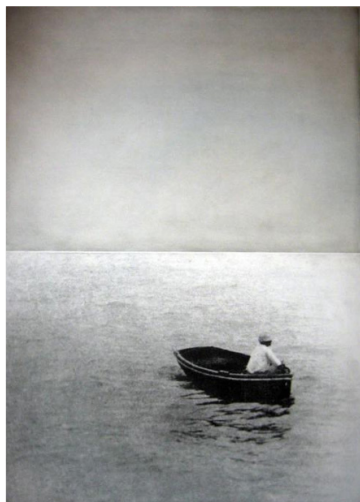
CIRRUS  
project 50

### **Hegel's Cellar, 1986**

Portfolio of 10 prints,  
continued

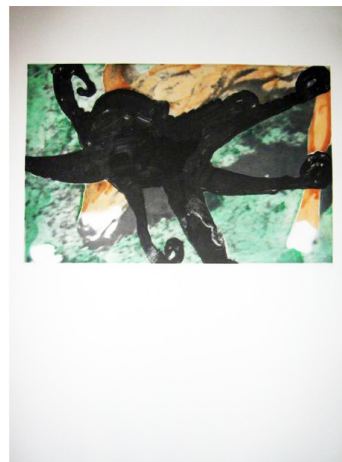
### **Boat (with Figure Standing)**

Photogravure and  
aquatint  
27 <sup>15</sup>/<sub>16</sub> × 20 <sup>1</sup>/<sub>8</sub> in.



### **Deer and Octopus**

Etching  
30 x 22 in.



### **Large Door**

Photogravure,  
aquatint, and  
embossing  
19 <sup>15</sup>/<sub>16</sub> × 38 <sup>1</sup>/<sub>4</sub> in.



### **Leg, Straw, Diver**

Photogravure and  
aquatint  
26 <sup>5</sup>/<sub>16</sub> × 19 <sup>9</sup>/<sub>16</sub> in.



# what i saw

## john baldessari prints, 1976–2015

FEBRUARY 8–APRIL 14, 2020

CIRRUS  
project 50

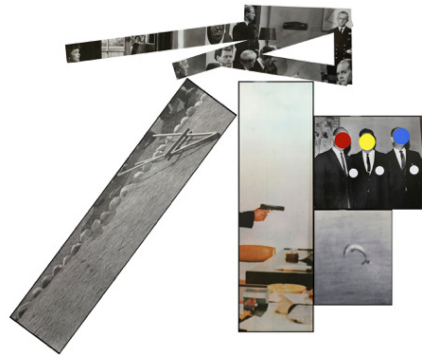
### 3. **Studio**, 1988

Lithograph, silkscreen,  
ed. 150  
30 ½ x 38 ½ in.  
NFS



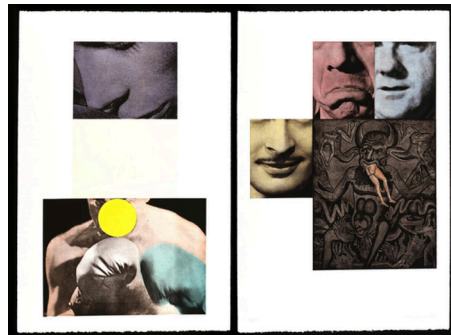
### 4. **The Fallen Easel**,

1988  
Lithograph, silkscreen  
on Arches 88, Rag-  
cote, and five alumi-  
num plates, ed. 35  
Approx. 74 x 95 in.  
Price available upon  
request



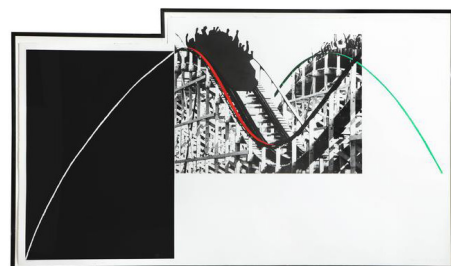
### 5. **Heaven and Hell**,

1988  
Aquatint, scraping,  
roulette, and pho-  
to-etching, ed. 45  
47 ¼ x 31 ½ in.  
\$20,000



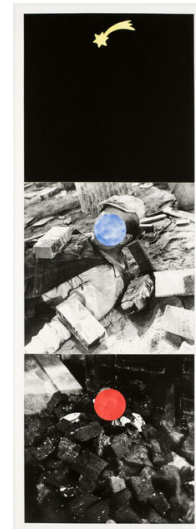
### 6. **Rollercoaster**,

1989–90  
Photogravure with  
color aquatint, ed. 45  
39 x 67 ½ in.  
\$35,000



### 7. **Falling Star**,

1989–90  
Photogravure with  
color aquatint, ed. 45  
62 ½ x 20 ⅝ in.  
\$8,000



### 8. **Two Sets (One with Bench)**,

1989–1990  
Photogravure and  
aquatint, ed. 45  
47 9/16 x 29 ¾ in.  
\$25,000



### 9. **Cliché: North American Indian (Red)**, 1995

Lithograph, silkscreen,  
ed. 50  
39 x 39 ¾ in.  
Price available upon  
request





# what i saw

## john baldessari prints, 1976–2015

FEBRUARY 8–APRIL 14, 2020

CIRRUS  
project 50

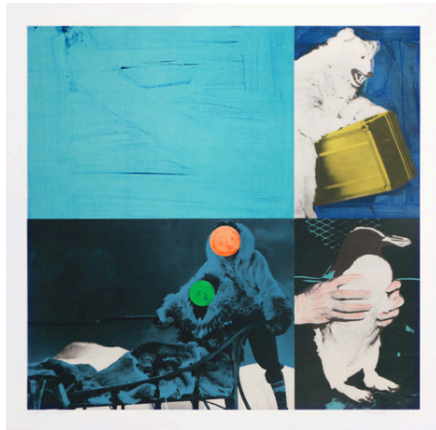
### 10. Cliché: Eskimo

(Blue), 1995

Lithograph, silkscreen,  
ed. 50

39 x 39 ¾ in.

Price available upon  
request

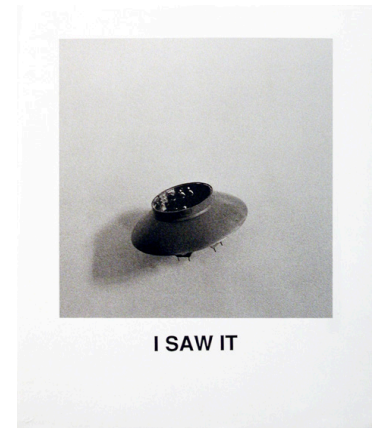


### 13. I Saw It, 1997

Lithograph, ed. 65

17 ¾ x 14 ¾ in.

NFS



### 11. Cliché: Japanese

(Yellow), 1995

Lithograph, silkscreen,  
ed. 50

39 x 39 ¾ in.

Price available upon  
request



### 14. Plant and Lamp

(B+Y; Y+B), 1998

Lithograph, ed. 65

17 x 32 in.

\$3,500



### 12. Two Erect

Figures/Two

Skateboards, 1995

Silkscreen, ed. 25

32 ½ x 27 9/16 in.

\$3,500



### 15. Man, Dog (Blue), Canoe/Shark Fins (One Yellow), Capsized Boat, 2002

Lithograph, ed. 60

29 ½ x 37 in.

\$6,500



### 16. The First \$100,000 I Ever Made, 2012

Pigment ink on  
Niyodo paper, chine-  
collé and lithography  
on Coventry, ed. 100

22 x 40 in.

\$6,500



THE FIRST \$100,000 I EVER MADE

# what i saw

## john baldessari prints, 1976–2015

FEBRUARY 8–APRIL 14, 2020



### 17. Engravings with Sounds: Snigger,

2015

Archival inkjet print,  
ed. 50

44 x 49 ½ in.

\$10,000



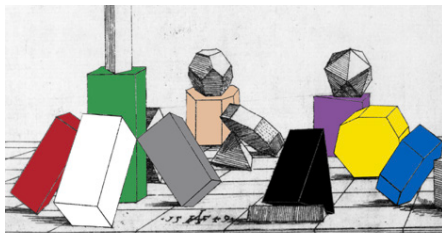
SNIGGER

### 18. Engravings with Sounds: Sniffle, 2015

Archival inkjet print,  
ed. 50

44 x 70 ¾ in.

\$15,000



SNIFFLE